

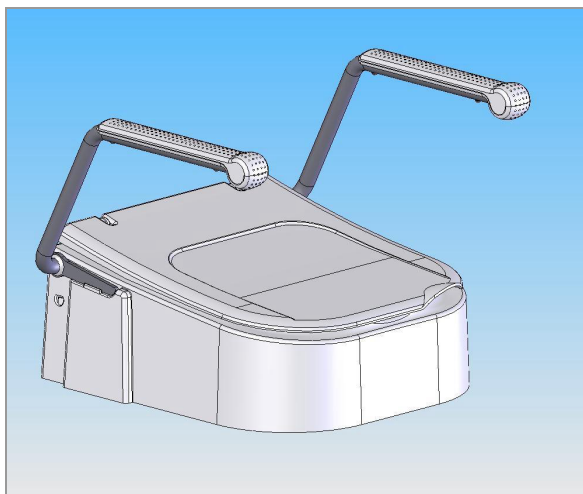
# Operating Instructions Raised Toilet Seat

## TSE 150

REF 520 1000 with armrests

REF 520 0500 without armrests

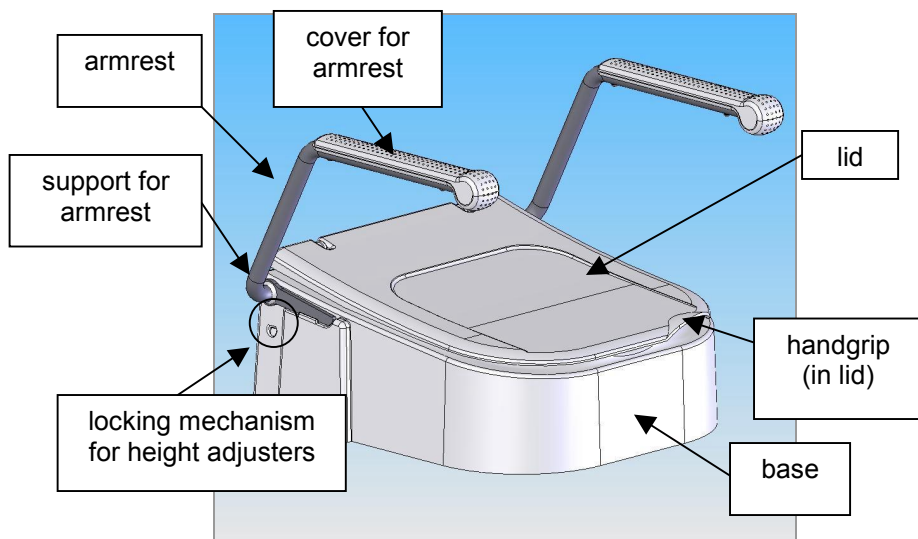
GB

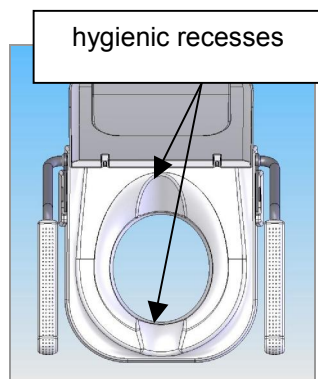
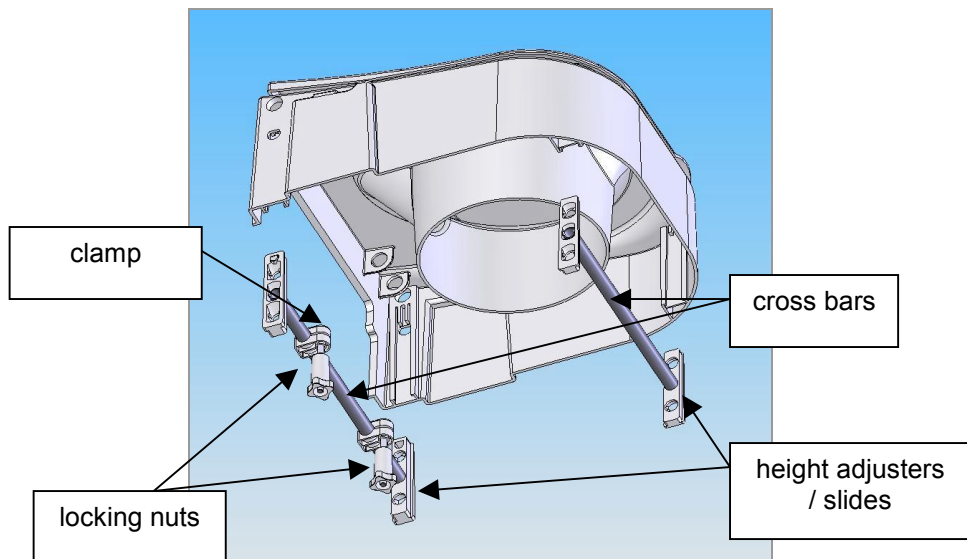


## Table of contents

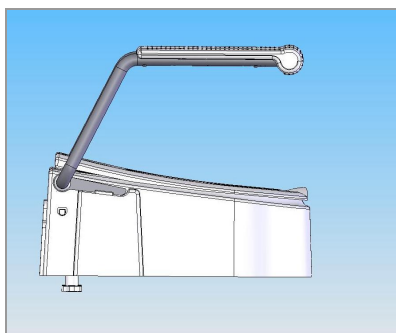
1. Parts of raised toilet seat.....	2
2. Indication .....	4
3. Scope of delivery contents .....	4
4. Mounting .....	4
5. Height adjustment .....	5
6. Assembling lid.....	7
7. Safety instructions.....	7
8. Maintenance and Care .....	7
9. Warranty .....	7
10. Disposal .....	7
11. Technical data.....	8
Your specialist dealer.....	8

### 1. Parts of raised toilet seat

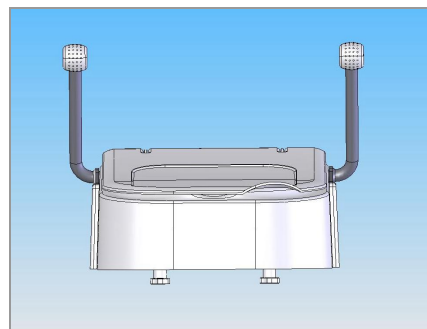




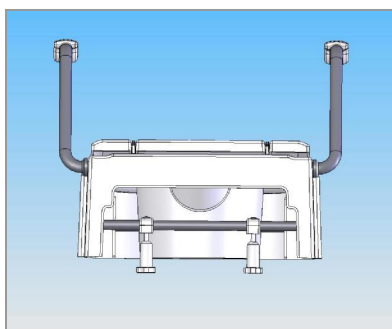
from above



side



front side



rear side

## 2. Indication

The toilet seat enables a higher degree of independence during the use of the toilet by compensating reduced or missing functions of the musculoskeletal system.

## 3. Scope of delivery contents

Contents supplied:

- Height adjustable toilet seat
- Operating instructions
- 1 pair of plastic gloves

*Additional with art. no. 520 0500:*

- two adjustable arm rests

## 4. Mounting

We suggest that this toilet seat is fitted by a competent person. No tools are required to fit this seat, however, it may be necessary to use tools to remove the existing seat. Remove the existing toilet seat.

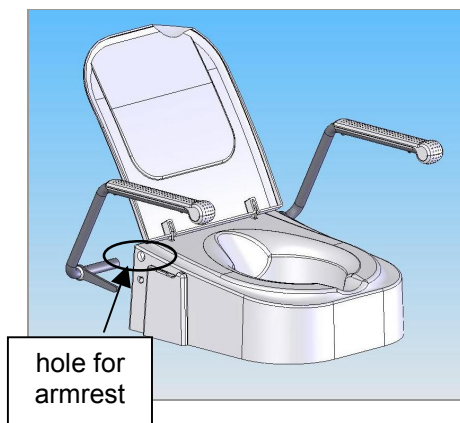
Unscrew the two rear white plastic locking nuts which are already attached to the two M8 threaded bolts.

Place the toilet seat on the WC, and locate the two rear securing bolts (M8 threaded rods), placing them directly into the two existing holes in the toilet basin.

Once the bolts (M8) are positioned in the locating holes in the toilet basin offer the two white plastic securing nuts. Screw these onto the bolts (M8) and fully tighten.

*Art. No. 520 1000:*

Align one of the arm rests to the hole on the side of the seat and insert it up to the point of the depressible nipple. Press the nipple level with the arm side and push home, the arm will stop when fully inserted. Then place arm in its resting position. Repeat this process on the other side of the seat for the second arm.



## 5. Height adjustment

The toilet seat comes readily positioned at the 10 cm height, if a further adjustment is required then proceed as follows.

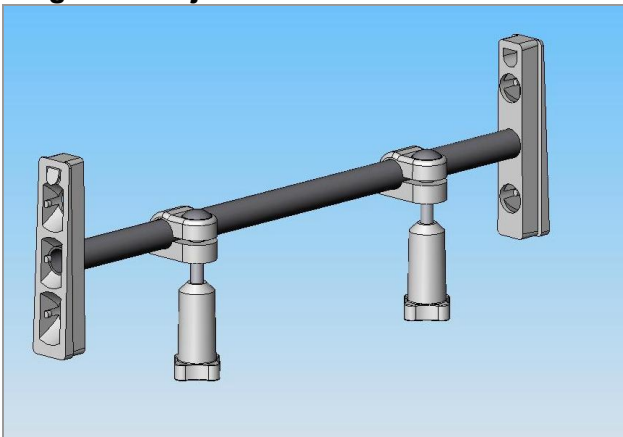
Release the two height adjusters on the rear sides of the toilet seat underneath the armrests by pressing the locking mechanism.

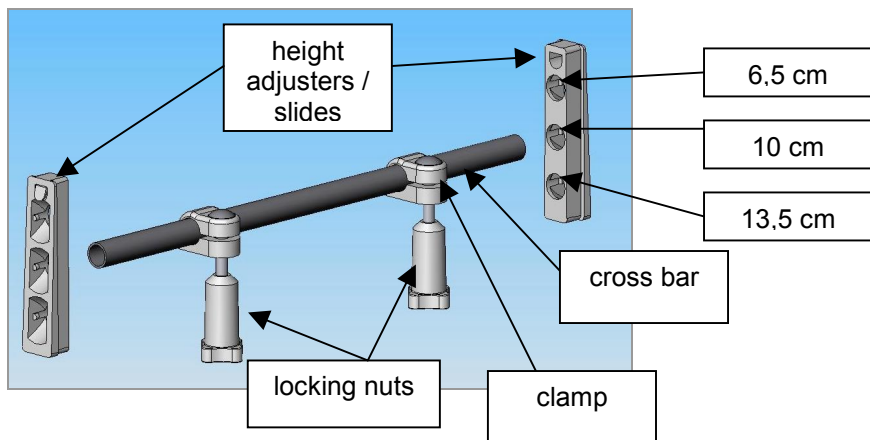
Then withdraw the rear height adjusters together with the cross bar that they are attached to. Also withdraw the front height adjusters with the cross bar. Refer to the diagrams 1 and 2. Remove the cross bars from the slide adjusters. Decide whether the 6.5 cm or 13.5 cm height is required. The full range of adjustment is from 6.5 cm, through 10 cm to a maximum of 13.5 cm.

Insert the cross bar in the holes for the desired height.

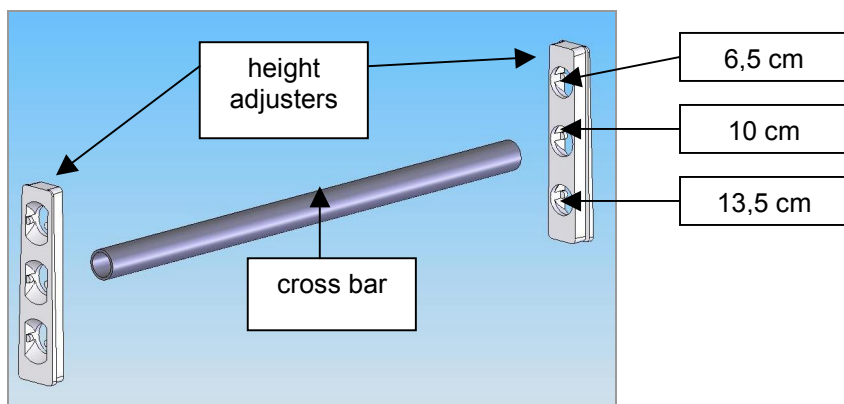
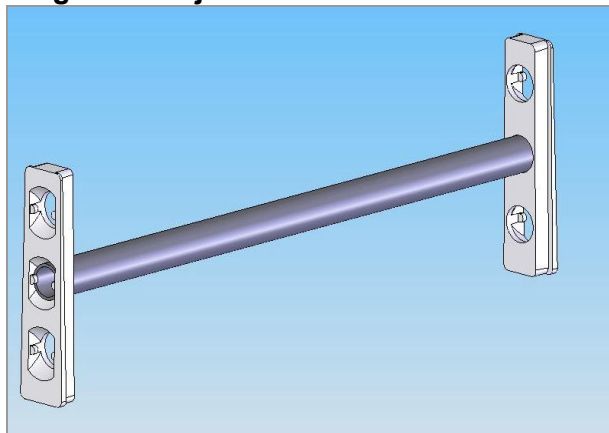
Make sure that the same height adjustment is made to the front slides of the seat. Repeat the same check for the back slides of the seat. The height adjustment in the front and the back does not need to be the same, i.e. the back of the seat maybe higher than the front. Please note the sliders will only fit back into place in one direction. Replace the height adjusters/slides with the cross bars in the seat. The rear height adjusters must click into place.

**Diagram 1 Adjustment cross bar rear**



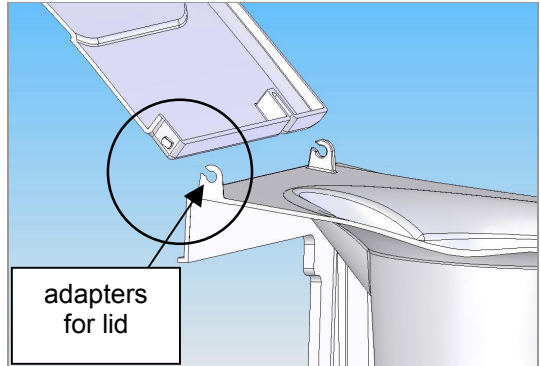


**Diagram 2 Adjustment cross bar front**



## 6. Assembling lid

If necessary, the lid can be removed or changed easily. Therefore open the lid completely (see picture) then the lid can be removed by taking it out from the adapters. If necessary, insert the new lid accordingly from rear side into the adapters and fold it down.



## 7. Safety instructions

The load of the toilet seat **should not exceed 150 kg!**

The load on the individual arm rest **should not exceed 100 kg.**

The toilet lid should not be loaded with weight, i.e. with the lid in the 'down' position.

Periodically check all fixings for tightness!

## 8. Maintenance and Care

The toilet seat should be regularly cleaned with non abrasive cleaning materials, do not bleach covers on arm rests.

## 9. Warranty

The toilet seat is guaranteed for 24 months from date of purchase. Subject to the correct cleaning materials being used and normal usage. Defective parts are replaced free of charge.

Our products are subject to a constant development and may change without prior notice. Nothing contained here effects your statutory consumer rights.

## 10. Disposal

Please note all parts and packaging are recyclable.

## 11. Technical data

Max. weight capacity	150 kg
Dimensions	
<i>without armrests</i> L / W / H	48.5 / 46 / 22.5 cm
<i>with armrests</i> L / W / H	48.5 / 56 / 41 cm
Dimensions opening L / W / H	25 / 23 / 16.5 cm
Width between armrests	approx. 48 cm
Weight without / with armrests	approx. 3.7 / 5.7 kg
Height adjustment	3 steps, 6.5 / 10 / 13.5 cm
Material	Plastic (PP), white

Subject to technical changes. Errors and omissions accepted.

**ENDRES UK Limited**  
**Globe Industrial Park**  
**Globe Lane - Stockport**  
**DUKINFIELD**  
**GB Cheshire SK16 4RE**  
**Phone + 44 870 4436044**  
**Fax + 44 161 343 3600**

as of: 04/2007

## Your specialist dealer

--